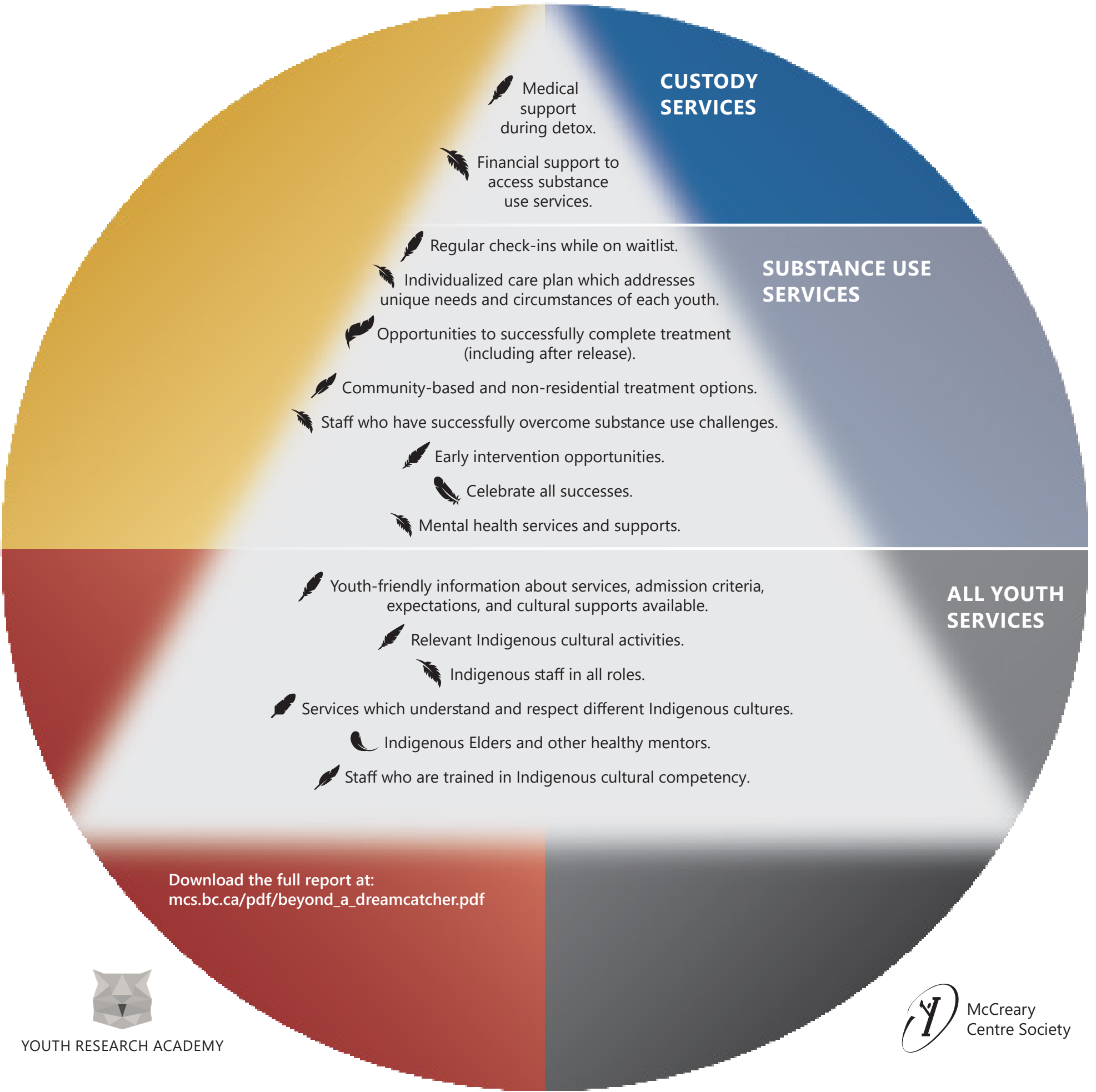


A YOUTH-DESIGNED CULTURALLY APPROPRIATE SERVICE DELIVERY MODEL

Between 2017 and 2019, a youth-led study explored how justice-involved Indigenous youth could be better supported when they experienced substance use challenges. As part of the project, young people who participated designed a culturally appropriate service delivery model to support justice-involved youth to overcome substance use challenges.

INDIGENOUS YOUTH RECEIVE ACCESS TO...



This project was conducted by members of McCreary Centre Society's Youth Research Academy (YRA). The YRA is a group of youth aged 16 to 24 with experience of the government care system, including the youth justice system. Members of the YRA are trained to conduct research projects of interest to youth in and from government care and the agencies that serve them.

McCreary Centre Society is a BC-based not-for-profit organization committed to promoting the health of BC youth through community-based research, evaluation and youth-led projects.

Funded by: 